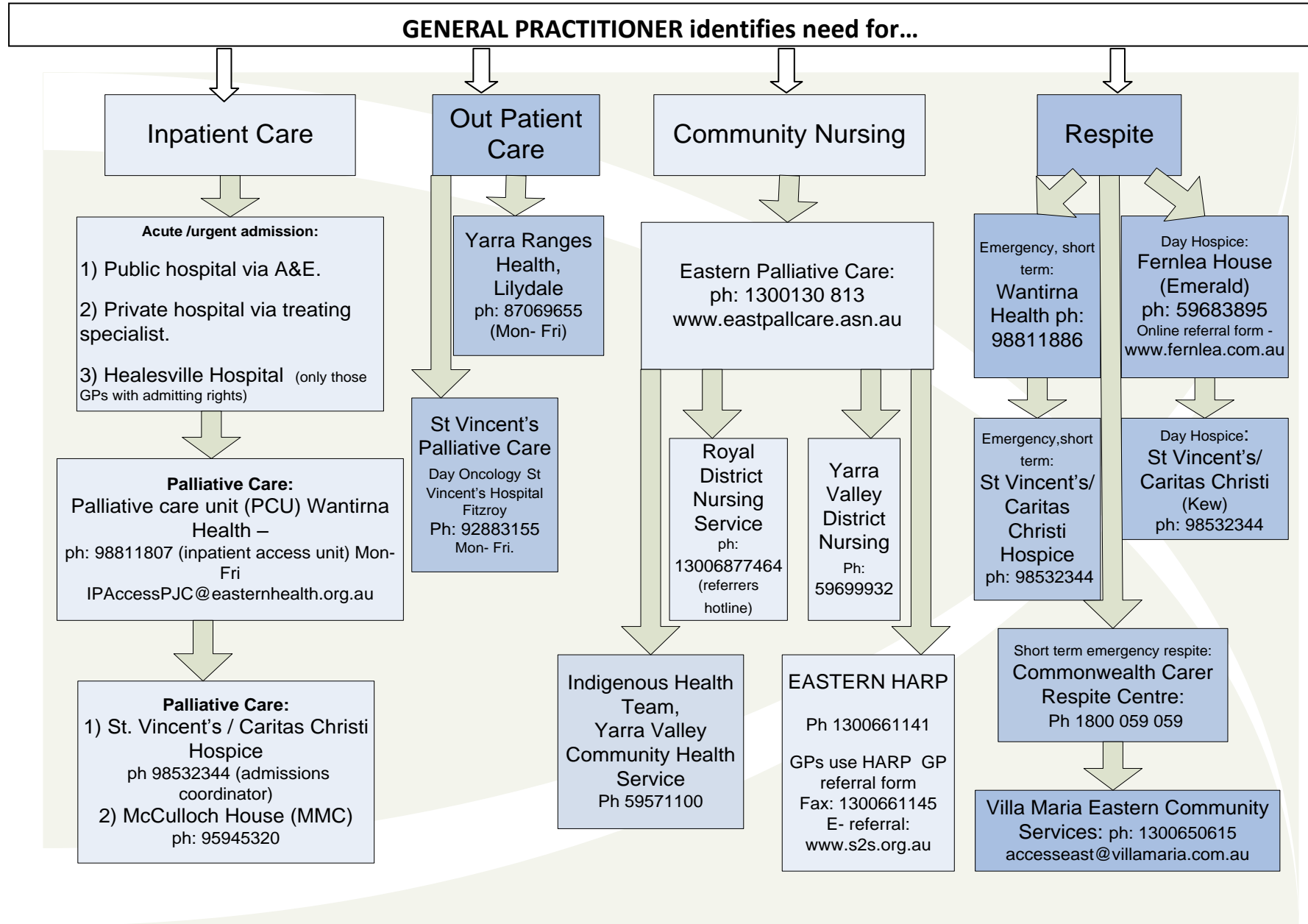


Palliative Care Service Access Information



SERVICE INFORMATION

<p>Wantirna Health (Eastern Health network): 251 Mountain Highway Wantirna South. 30 bed Palliative Care Unit. -symptom assessment and management via multidisciplinary team - terminal care - short, emergency respite Mon-Fri 8.30-4.30 pm. Ph: 98811807 Electronic: IPAccessPJC@easternhealth.org.au</p>	<p>St Vincent's /Caritas Christi Hospice 28 beds (Kew) & 8 beds (Fitzroy-St Vincent's) - Out patients clinic (Fitzroy, ph: 92883155) -Symptom assessment and management - terminal care - short, emergency respite Access : Mon – Sun - Multidisciplinary team ph: 98532344 (admissions coordinator)</p>
<p>Yarra Ranges Health (Eastern Health) 25 Market St Lilydale Community out patients clinic -symptom assessment and management - occupational therapy - day oncology within facility - Multidisciplinary assessment Mon – Fri 8.30- 5pm Ph: 87069655 Fax: 90918899 Electronic: www.easternhealth.org.au (click Yarra Ranges Health – Departments- Palliative Care)</p>	<p>Eastern Palliative Care (EPC): Specialist community palliative care service. -Specialised nursing -24 hours telephone support/triage -palliative care medical consultancy - psychosocial support/music/art/massage/biography/volunteers. - consult service to residential aged care Referrals Mon- Fri 8.30-5pm Ph 1300130813 Electronic: www.eastpallcare.asn.au (click on referral form) <i>GP contact person (with access to palliative physicians) is Kylie Draper-Manager Nursing and Medical Services ph: 1300130813</i></p>
<p>Royal District Nursing Service: Community nursing service. -Fees apply. -24 hours/day; 7 days a week - Shared care agreement with EPC for some clients. . Ph 13006877464 (referrer's hotline).</p>	<p>Fernlea House: Day respite program for palliative clients in a 30km radius of Emerald. In home respite. Carer support programs; bereavement programs. Ph: 59683895 www.fernlea.com.au</p>
<p>Indigenous Health Team - Yarra Valley Community Health Service - Indigenous Health Worker - Social, emotional wellbeing support Ph: 59571100 www.easternhealth.org.au</p>	<p>Eastern HARP Ph: 1300 661 141 - Care coordination - Specialist clinical nurse support - Allied health</p>
<p>McCulloch House: 16 bed palliative care/hospice unit located at Monash Medical Centre Clayton. Referral for Monash clients: Ph 95945320</p>	

